

MONTHLY MEMBERSHIP PROGRESS REPORT

District 32 S

Results as of: 6/30/2020

GMT:

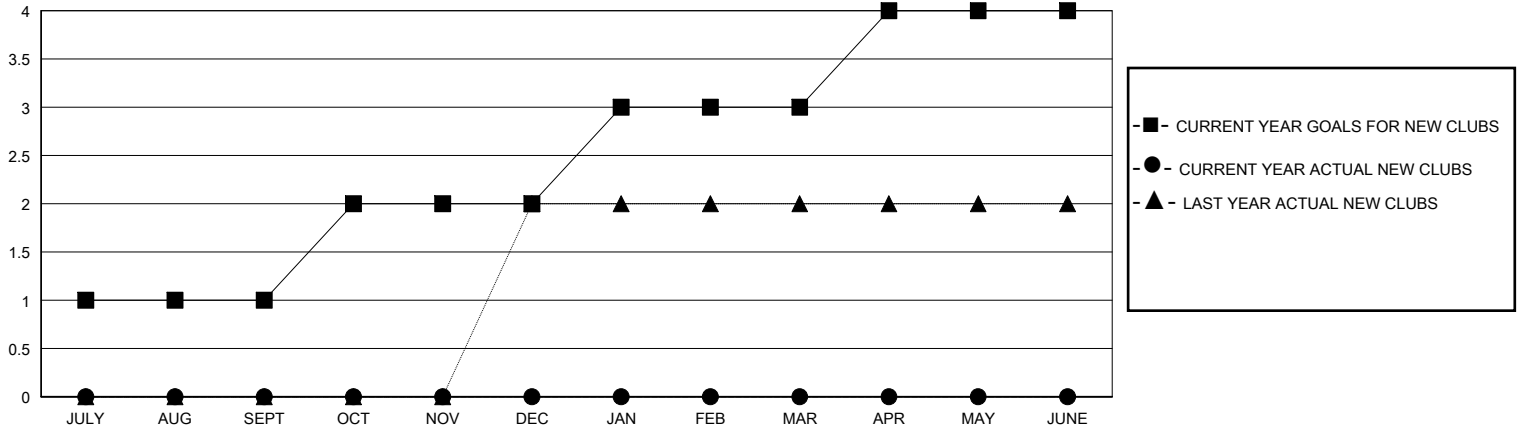
LOCATION SOUTH CAROLINA

GMT CA

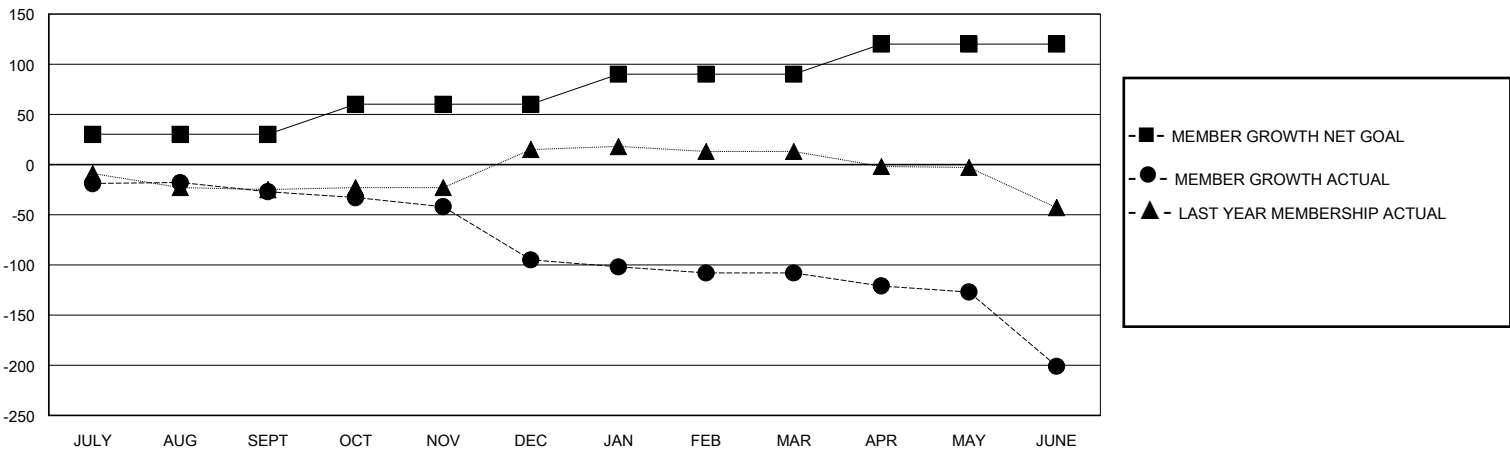
Clubs			
RESULTS FOR 2019-2020			
QUARTER	NEW CLUB GOAL	NEW CLUBS	DROPPED CLUBS
JULY/AUG/SEPT	1	0	0
OCT/NOV/DEC	1	0	1
JAN/FEB/MAR	1	0	0
APR/MAY/JUNE	1	0	0

Members			
RESULTS FOR 2019-2020			
QUARTER	MEMBER GROWTH NET GOAL	MEMBER GROWTH ACTUAL	DROPPED MEMBERS ACTUAL (including transfers)
JULY/AUG/SEPT	30	49	73
OCT/NOV/DEC	30	26	91
JAN/FEB/MAR	30	51	58
APR/MAY/JUNE	30	23	114

GOALS AND ACTUAL NEW CLUBS CUMULATIVE



GOALS AND ACTUAL MEMBERS CUMULATIVE



DROPPED CLUBS: 1	35 CLUBS OF 68 ADDED 1 OR MORE NEW MEMBERS	GENDER DISTRIBUTION	
		MALE 1,117 (65.32%)	FEMALE 593 (34.68%)
DROPPED MEMBERS		CLICK HERE FOR CUMULATIVE MEMBERSHIP DATA	TOTAL FAMILY UNIT MEMBERS 402
DECEASED 41	CLUB CANCELLED 8		FAMILY MEMBERS PAYING HALF DUES 203
OTHER 287	TOTAL 336		